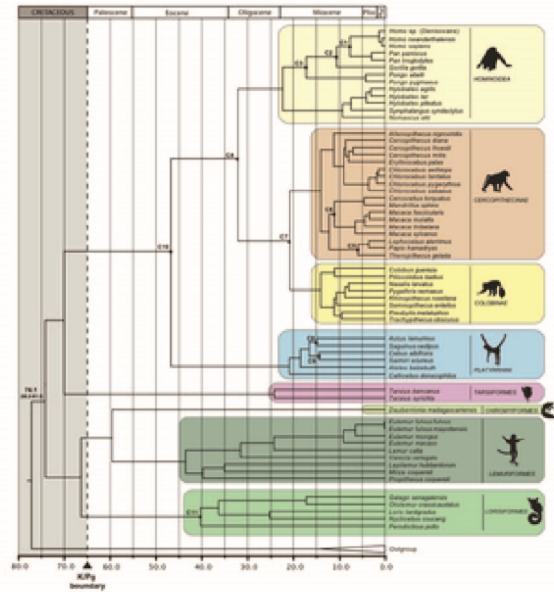
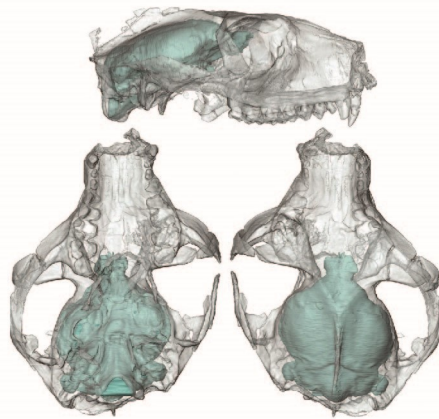


# Spring 2017 Primate Evolution



Survey of primate evolution from Paleocene through Miocene epochs. Methods of paleontological inference. Emphasis on problems of taxonomy, phylogeny, biogeography and functional morphology in the fossil record.

Instructor: Dr. Jonathan I. Bloch (jbloch@flmnh.ufl.edu)

ANT 4554C\* section 2B99; ANG 6930 section 2G93  
ZOO 4926\*\* section 2H41; ZOO 6927 section 2H44  
3 Credits: Tuesday periods 8&9; Thursday period 9  
RM: TUR 2318/Dickinson Hall 371 (TBD)

\*Prereq: ANT 3514C or instructor permission;

\*\*Prereq: BSC 2011 and 2011L or equivalent and instructor permission

Textbook: Primate Adaptation & Evolution, 3rd Ed (2013) by John Fleagle. Academic Press

**Graduate and undergraduate students are welcome!**