

SPRING  
**2023**



# MARINE BIOLOGY

ZOO 4403C

W 12:50 - 2:45 CRR 611

F 12:50 - 4:55 CRR 611

\*See Canvas for a fully-detailed, text-only syllabus

**Dr. Melissa Meadows** (she/her)

Melissa.Meadows@ufl.edu  
CRR 522B  
(352) 294-6310

**TA: Ashley Meade Kusel** (she/her)

ashleymeade@ufl.edu

WHAT WILL I LEARN?	1
WHAT DO I NEED?	1
HOW WILL I EARN MY GRADE?	2
HELP!!!!!!!!!!	3
TIPS AND TRICKS	4
SCHEDULE	5-6

**DROP-IN Office Hours with Dr. M**

Mon 10:45-11:45 am  
Wed 3-4 pm  
Or by appointment

# WHAT WILL I LEARN?

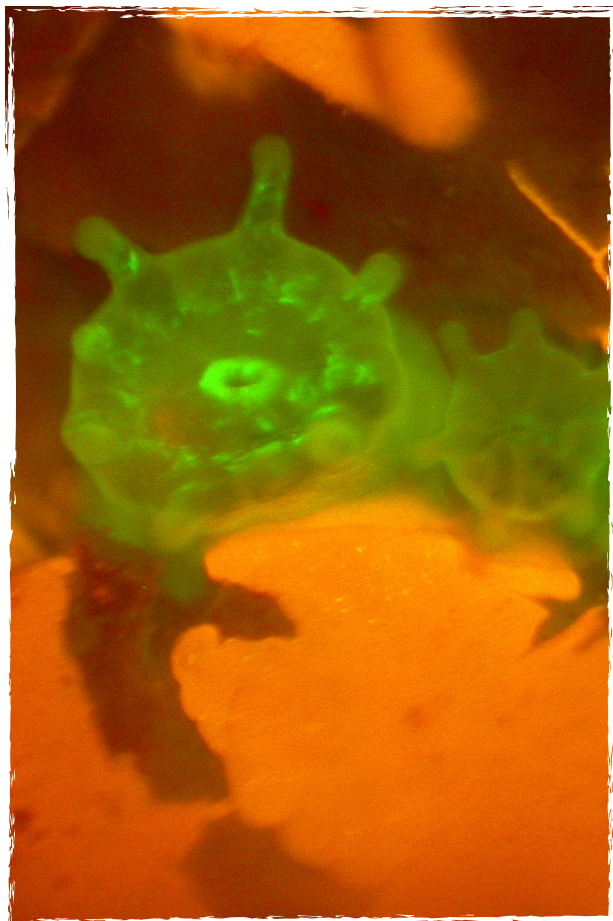


Only all the most AWESOME things about the ocean! In this course, you'll learn about all sorts of marine organisms as well as important aspects of physical oceanography that dictate much about the lives of the ocean's denizens. We will talk a bit about ocean ecology as well.

Most importantly, you'll be equipped to face some of the greatest challenges to our Earth by educating and working towards a better, more informed future.

Plus we'll read a really funny (and informative!) book!

(See Canvas for a full list of learning objectives.)



## What will I need?

**eTextbook through McGraw-Hill Connect:** Marine Biology (11th Ed.), Castro & Huber, 2019, McGraw-Hill.

**Fun Book through Perusall:** Sex in the Sea: Our Intimate Connection with Sex-changing Fish, Romantic Lobsters, Kinky Squid, and Other Salty Erotica of the Deep, by Marah J. Hardt, 2016, St. Martin's Press.

**UF All-Access** - get your Connect account here!

**Optional Field Guides:** Suggestions on Canvas

**Canvas:** Set preferences in Canvas so you receive timely notifications of course announcements.

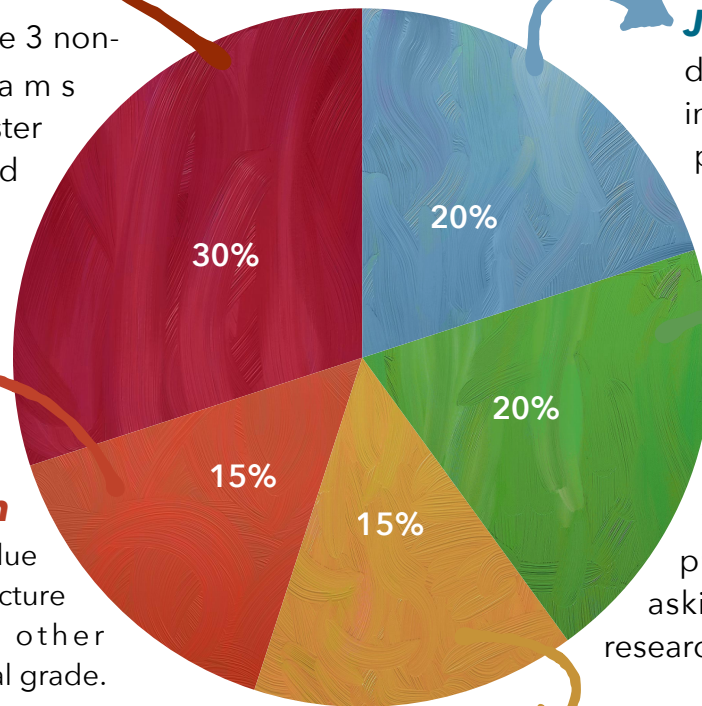
# How will my learning be assessed?

Course grades will be weighted as follows:

**Exams** We will have 3 non-cumulative exams throughout the semester on topics discussed during lecture. Each exam is worth 10% of the final grade.

## Assignments & Participation

McGraw-Hill Connect (due Sundays 11:59 PM), lecture participation, and other activities. 15% of the final grade.



**Sex in the Sea Book & Journal Club** Participate in discussions on each chapter in Perusall (due Fridays 12:50 pm) and in class. In groups, pick a research paper that relates to your favorite chapter and lead a class discussion.

## Research Proposal

Propose a novel research project as a group on a topic of your choice! Give a presentation as if you are asking for funding for your research. 20% of the final Grade.

**Field Activities & Reports** Participate in 3 field/ lab activities, keep a field notebook, and submit reports with observations, data, and ideas. See dates on schedule. 15% of the final grade.

## GRADE SCALE

A	≥ 93.00%
A-	≥ 90.00%
B+	≥ 87.00%
B	≥ 83.00%
B-	≥ 80.00%
C+	≥ 77.00%
C	≥ 73.00%
C-	≥ 70.00%
D+	≥ 67.00%
D	≥ 63.00%
D-	≥ 60.00%
E	< 60.00%

## ATTENDANCE

This is a small class, and if you aren't here, I'll worry! Missed in-class and field trip assignments cannot be made up. If you have a planned conflict, discuss it with me in advance. If there is an unforeseen circumstance, please let me know as soon as possible. I know that special circumstances may come up during this difficult time, and we will stay in communication to ensure your success. Please see the UF policy for excused absences here: <https://catalog.ufl.edu/UGRD/academic-regulations/attendance-policies/>

**No make-up exams** without prior permission or documentation of illness. Students missing an exam due to a university-approved excused absence should let the instructor know in advance. In case of illness or emergency on exam day, students must submit documentation here: <https://care.dso.ufl.edu/instructor-notifications/> and request a letter be sent to the instructor.

# WHAT OTHER POLICIES SHOULD I FOLLOW?



## ***What is expected in class?***

PARTICIPATE. Ask questions. Connect. Bring your computer, but don't use it for non-class activities. Be respectful. Silence your phone. Don't do anything that distracts your neighbors' learning or your instructor's teaching.



## ***How will we celebrate diversity?***

We need diversity of opinion, social class, culture, religion, sexual orientation, gender, race, ethnicity, and ability in science. Enjoy the diverse scientists you learn about. Ask why diversity is lacking. Maintain an environment of respect and inclusion at all times. Listen and learn from all.



## ***What if I have a disability?***

Contact the Dean of Students Office of Disability Resources, Peabody 202, 352-392-1261. I will work with them to accommodate you. More info: <https://disability.ufl.edu/>.



## ***What if I need to withdraw?***

The add/drop deadline and the last day to withdraw from a course with a W on your transcript are listed online here: **Dates and Deadlines:** <https://catalog.ufl.edu/UGRD/dates-deadlines/>

# WHAT IF I NEED HELP?



## ***Questions and Concerns***

If you don't understand something or are concerned about a grade, talk to me ASAP. Do not wait until a failed exam. Ask in class, during office hours, or via email.



## ***Come visit!***

I will always be available for you in my office (CRR 522B) during the office hours listed on the cover sheet. If those times don't fit your schedule, you can make an appointment.



## ***Emailing Instructors***

I will respond to you within 24 hrs during the week. After 5 on Fri I will not respond until Mon. Be professional in tone and expectations. Please do not expect an immediate response. [Melissa.Meadows@ufl.edu](mailto:Melissa.Meadows@ufl.edu)



## ***U Matter, WeCare!***

ASKING FOR HELP IS A SIGN OF STRENGTH. We are living through historical difficulty. If you or a friend is in distress, contact [umatter@ufl.edu](mailto:umatter@ufl.edu). More info: <https://umatter.ufl.edu/>. Or contact the Counseling and Wellness Center at (352) 392-1575. <https://counseling.ufl.edu/>

# tips for SUCCESS



## 01 **ATTEND AND PARTICIPATE**

Studies show that the more you discuss, draw, analyze, and actively participate in class, the more you learn!

## 02 **READ**

Read assigned reading before lecture for each module. Then use lectures to hone understanding and apply your knowledge.

## 03 **TAKE NOTES**

Do not be a passive listener! Take active notes while watching lectures, especially on questions asked in the lecture.

## 04 **ASK QUESTIONS**

Ask immediately. Don't be afraid to ask me to meet and go over something again! Chances are, others need a clarification, too.

## 05 **USE YOUR RESOURCES**

Use this syllabus to answer questions about the course and locate help when you need it. Use Canvas. Use BOOKS.

## 06 **PLAN AHEAD**

Plan 12-16 hrs/wk, including 6 hrs for lecture, discussion, and lab and 6-10 hrs on reading, assignments, and studying. Don't start studying or projects at the last minute.

## 07 **STUDY EFFECTIVELY**

Visit [learningscientists.org](http://learningscientists.org) to learn the 6 strategies for effective learning. Guess what the first one is? NO CRAMMING!

## 08 **I CARE!**

I am deeply invested in YOU and your happiness and success. Email me, come to drop-in office hours, etc. to go over course material, talk about life, or just say hi!

# Schedule



## ACADEMIC HONESTY

Any acts of cheating, plagiarism, or other forms of academic dishonesty will result in, at minimum, a 0 grade for the assignment or test AND a reduction in the course grade by 1 letter. Sharing information about tests or homework answers with students in future or past classes, or posting on social media information about same, is a serious act of academic dishonesty. Turing in assignments that match classmates' is plagiarism. If you witness any instances of academic dishonesty in this class, please notify the instructor or contact the Student Honor Court (392-1631) or Cheating Hotline (392-6999). For additional information on Academic Honesty, please refer to the UF Student Honor Code and Student Conduct Code at: <https://sccr.dso.ufl.edu/process/student-conduct-code/>

<i><b>Week of</b></i>	<i><b>Lecture Topic</b></i>	<i><b>Chapter</b></i>	<i><b>Friday Activity</b></i>
1/9	Module 1: The Science of Marine Biology	1	Introduction to Sex in the Sea; Sign up to lead discussion of your favorite chapter!
1/16	Module 2: The Sea Floor	2	
1/23	Module 3: Chemical and Physical Features of Seawater and the World Ocean (Part 1)	3	SS Ch 1: The Quest: Seeking Sex in Saltwater
1/30	Module 4: Chemical and Physical Features of Seawater and the World Ocean (Part 2)	3	SS Ch 2: Luring a Lover: The Art of Salty Seduction
<b>EXAM 1 (CH 1 - 3) FRIDAY 2/3</b>			
2/6	Module 5: The Microbial World	5	SS Ch 3: Sex Change in the Sea
2/13	Module 6: Multicellular Primary Producers	6	SS Ch 4: The Penis Chapter: Sex as a Contact Sport
2/20	Module 7: Marine Animals Without a Backbone (Part 1)	7	SS Ch 5: Inner Chambers: Influencing Sex from the Inside Out

# Schedule Continued...

<i>Week of</i>	<i>Lecture Topic</i>	<i>Chapter</i>	<i>Friday Activity</i>
2/27	Module 8: Marine Animals Without a Backbone (Part 2)	7	<b>Form MRP groups</b>
<b>EXAM 2 (CH 5 - 7) FRIDAY 3/3</b>			
3/6	Module 9: Marine Fishes (Part 1)	8	SS Ch 6: Oceanic Orgies: Getting it on in Groups; <b>Meet with MRP group</b>
NO CLASS WEEK OF 3/13 - SPRING BREAK			
3/20	Module 10: Marine Fishes (Part 2)	8	SS Ch 7: Synchronized Sex: A Neighborly Affair
<i>Mock Research Proposal Group Meeting With Dr. Meadows by 12:50pm Friday 3/24</i>			
3/27	Module 11: Marine Reptiles, Birds, and Mammals (Part 1)	9	SS Ch 8: Turning up the Sex Drive: How to Spark Successful Sex at Sea
<i>Mock Research Proposal Synopsis Due 12:50pm Friday 3/31</i>			
4/3	Module 12: Marine Reptiles, Birds, and Mammals (Part 2)	9	Work on MRP presentations
4/10	Module 13: Introduction to Marine Ecology and Our Changing Planet	10	Discuss Our Changing Planet; <b>Mock Research Proposal Presentations</b>
<i>Mock Research Proposal Presentations must be uploaded by 12:50pm Friday 3/14</i>			
4/17	Module 14: Careers in Marine Biology, Course Wrap-Up		<b>Mock Research Proposal Presentations</b>

**EXAM 3 (CH 8 - 10) WEDNESDAY 4/26**

## DUE DATES

All Perusall assignments are due by 12:50 pm Fridays. All Connect assignments are due by 11:59 pm Sundays. Due dates and times for other assignments will be announced.

# Field Trips

On 4 Saturday field trips, you will collect data and identify organisms at marine field sites. And it will also be SUPER fun! Some notes on field trips:

- ★ You must attend and turn in an assignment for at least 3 trips.
- ★ You will need close-toed footwear and may wish to have rubber boots (especially for the mudflat at Matanzas Inlet).
- ★ You will need to bring appropriate clothing for the weather (rain or shine!), sunblock, water, a lunch and snacks, and anything else personal you may need during the day.
- ★ You will need a field notebook that is composition book style or a write-in-the-rain notebook. You will turn in your labs digitally (PDF or Word), but you will need something to capture field observations and data.
- ★ Saturday Field Trip Info:
  - ★ Feb 4 (tentative) - Florida Aquarium in Tampa! Explore the aquarium taking special note of the organisms and their habitats. Cost: \$11 cash. Leave UF 8:00 AM, return UF about 4 PM
  - ★ Mar 4 - Marineland Rocky Shore! Gather data on vertical zonation and identify critters in this unique-in-Florida rocky shore environment. Leave UF 10:00 AM (Low tide 1:37 PM), return UF about 4:30 PM
  - ★ Mar 25 - Seahorse Key Marine Lab! Trawl for critters on a boat and explore the island. Leave UF 7:30 AM, return about 4 PM (maybe earlier)
  - ★ April 1 - Matanzas Inlet Mud Flat! Explore the creatures that live in the sediment and on the surface of the mudflat and walk around to the sandy beach. Leave UF 9:30 AM (Low tide 1:12 PM), return about 4:00 PM
- ★ Need an alternative? You can complete an alternative assignment in place of 1 field trip if needed. Must attend at least 2 trips with the class. See Dr. Meadows for details.